

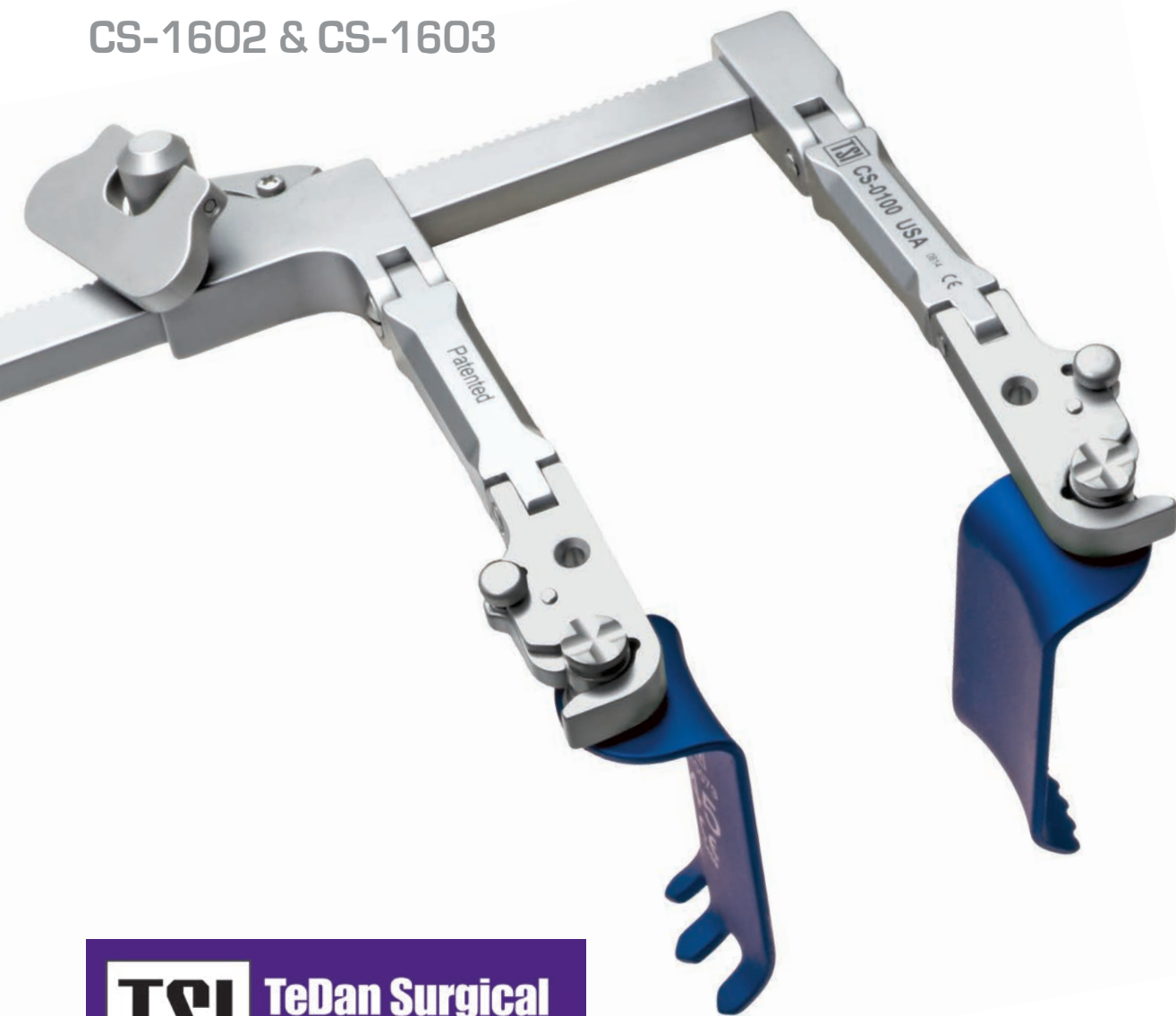
# PHANTOM CS™ SERIES

## SIDE-LOADING

## RETRACTOR

## SETS

CS-1602 & CS-1603



**TSI**

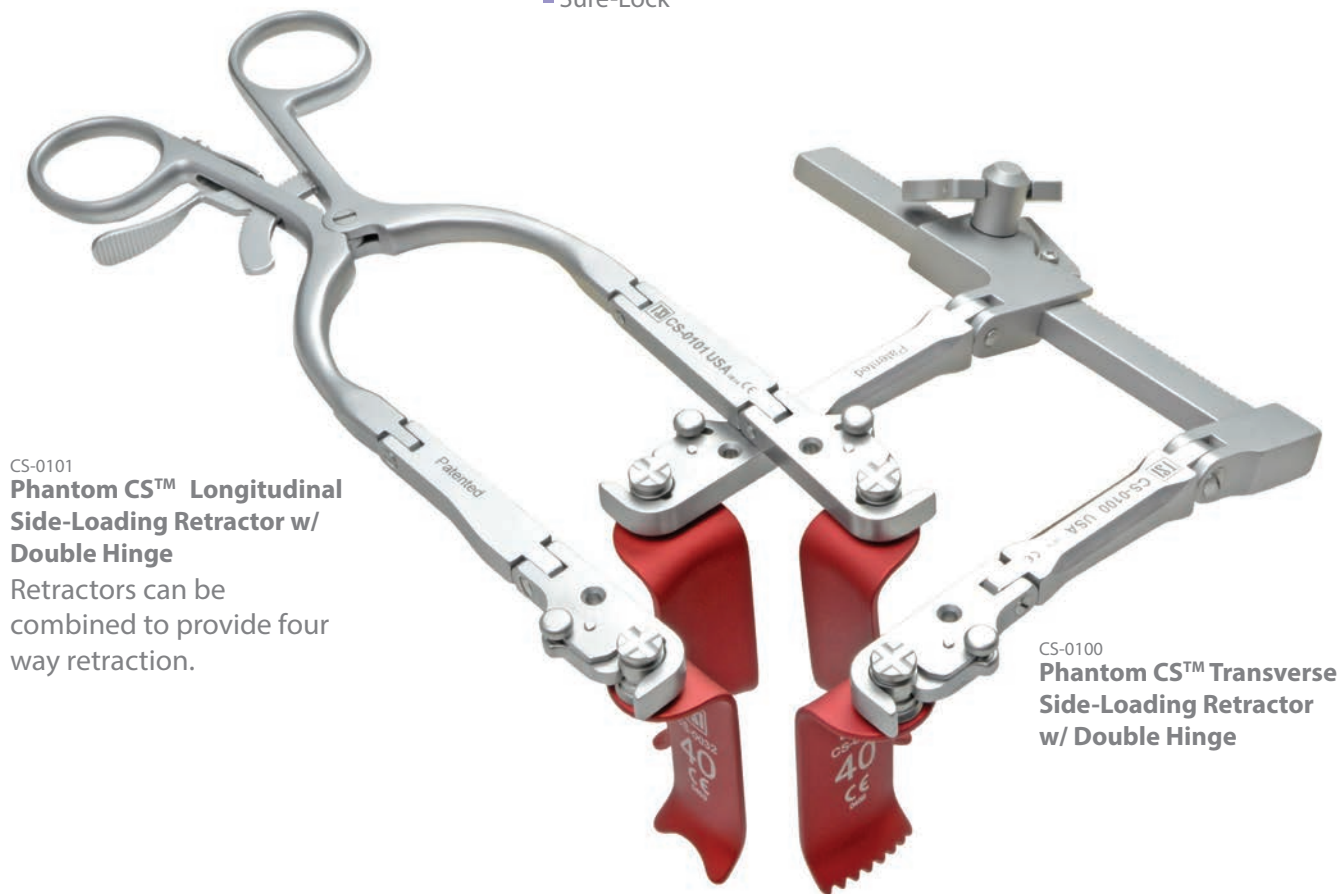
**TeDan Surgical  
Innovations**

# Phantom CS™ CERVICAL SET

CS-1602 & CS-1603

## RETRACTORS

Side-Loading retractors provide an easy yet secure attachment space for blades. TSI's Sure-Lock™ technology ensures that blades are securely connected to the retractor body.



CS-0101  
**Phantom CS™ Longitudinal Side-Loading Retractor w/ Double Hinge**

Retractors can be combined to provide four way retraction.

CS-0100  
**Phantom CS™ Transverse Side-Loading Retractor w/ Double Hinge**

## RETRACTOR BLADE HANDLES

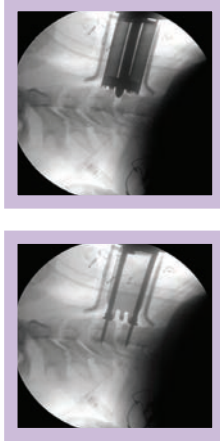
Retractor blade handles facilitate a quick connection to the retractor bodies. The blade handles may be used as a hand held tissue and muscle retractor with any blade. Cross cut connector helps prevent blade rotation while in the handle. Once blades are locked into the retractor body, twist the blade handle counter clockwise and slide forward to disengage.



CS-0105  
**Phantom CS™ Side-Loading Retractor Handle**

## TWIST DRILL & DRILL GUIDES

Drill guides penetrate cortical bone and the twist drill fits down the drill guide tube. Using the drill guide to fixate the distraction screws provides parallel placement between the vertebral bodies and increases the stability of the distractor body.



CS-0112  
**Phantom CS™  
Twist Drill**

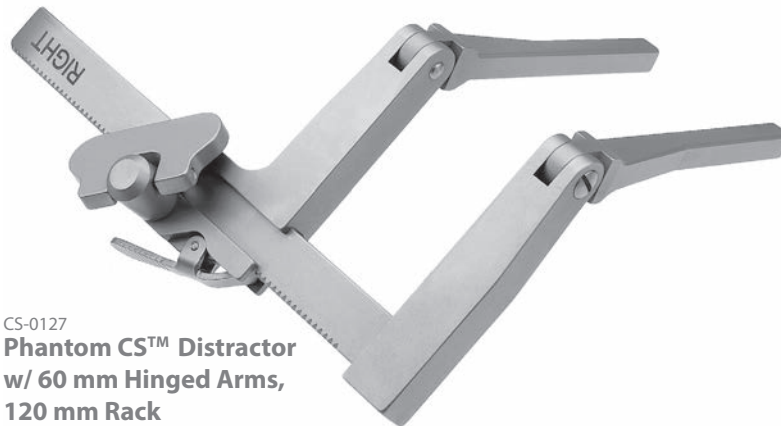
CS-0119  
**Phantom CS™  
Distraction Screw  
Drill Guide**

# EXPERIENCE THE DIFFERENCE. EXPERIENCE INNOVATION.

Phantom CS™ Side-Loading Retractor System provides exposure for ACDF procedures. Patented Sure-Lock™ technology ensure that the retractor blades are securely attached. Multiple blades options accommodate diverse patient anatomies.

## DISTRACTORS

Unique hinging feature eliminates the need for two distractors.



CS-0127  
**Phantom CS™ Distractor  
w/ 60 mm Hinged Arms,  
120 mm Rack**

## RETRACTOR BLADES

A wide variety of cervical retractor blades are radiolucent and ideal for procedures using fluoroscopy.

CS-0030 - CS-0077  
**Phantom CS™ Retractor  
Blades**

-Available in blunt, short tooth and long tooth



## TeDan Surgical Innovations, LLC

Ph: 713-726-0886 Fax: 713-726-0846 Toll Free: 877-726-0886

12615 West Airport Blvd., Suite #200, Sugar Land, Texas 77478

Email: [sales@tedansurgical.com](mailto:sales@tedansurgical.com)

[www.tedansurgical.com](http://www.tedansurgical.com)

# PHANTOM CS™ SIDE-LOADING SET

## CS-1602

CAT. NO.	DESCRIPTION	QTY.
CS-0030	PHANTOM CS CERVICAL BLADE BLUNT 20 x 30MM, SILVER	2
CS-0031	PHANTOM CS CERVICAL BLADE BLUNT 20 x 35MM, BLUE	2
CS-0032	PHANTOM CS CERVICAL BLADE BLUNT 20 x 40MM, RED	2
CS-0033	PHANTOM CS CERVICAL BLADE BLUNT 20 x 45MM, GREEN	2
CS-0034	PHANTOM CS CERVICAL BLADE BLUNT 20 x 50MM, VIOLET	2
CS-0035	PHANTOM CS CERVICAL BLADE BLUNT 20 x 55MM, BLACK	2
CS-0036	PHANTOM CS CERVICAL BLADE BLUNT 20 x 60MM, GOLD	2
CS-0037	PHANTOM CS CERVICAL BLADE BLUNT 20 x 65MM, NAVY	2
CS-0038	PHANTOM CS CERVICAL BLADE BLUNT 20 x 70MM, LIGHT GREEN	2
CS-0039	PHANTOM CS CERVICAL BLADE BLUNT 20 x 75MM, ORANGE	2
CS-0050	PHANTOM CS CERVICAL BLADE SHORT TEETH 23 x 30MM, SILVER	1
CS-0051	PHANTOM CS CERVICAL BLADE SHORT TEETH 23 x 35MM, BLUE	1
CS-0052	PHANTOM CS CERVICAL BLADE SHORT TEETH 23 x 40MM, RED	1
CS-0053	PHANTOM CS CERVICAL BLADE SHORT TEETH 23 x 45MM, GREEN	1
CS-0054	PHANTOM CS CERVICAL BLADE SHORT TEETH 23 x 50MM, VIOLET	1
CS-0055	PHANTOM CS CERVICAL BLADE SHORT TEETH 23 x 55MM, BLACK	1
CS-0056	PHANTOM CS CERVICAL BLADE SHORT TEETH 23 x 60MM, GOLD	1
CS-0057	PHANTOM CS CERVICAL BLADE SHORT TEETH 23 x 65MM, NAVY	1
CS-0070	PHANTOM CS CERVICAL BLADE LONG TEETH 23 x 30MM, SILVER	1
CS-0071	PHANTOM CS CERVICAL BLADE LONG TEETH 23 x 35MM, BLUE	1
CS-0072	PHANTOM CS CERVICAL BLADE LONG TEETH 23 x 40MM, RED	1
CS-0073	PHANTOM CS CERVICAL BLADE LONG TEETH 23 x 45MM, GREEN	1
CS-0074	PHANTOM CS CERVICAL BLADE LONG TEETH 23 x 50MM, VIOLET	1
CS-0075	PHANTOM CS CERVICAL BLADE LONG TEETH 23 x 55MM, BLACK	1
CS-0076	PHANTOM CS CERVICAL BLADE LONG TEETH 23 x 60MM, GOLD	1
CS-0077	PHANTOM CS CERVICAL BLADE LONG TEETH 23 x 65MM, NAVY	1
CS-0100	PHANTOM CS TRANSVERSE RETRACTOR W/DOUBLE HINGE, 120MM RACK	1
CS-0101	PHANTOM CS LONGITUDINAL RETRACTOR W/DOUBLE HINGE	1
CS-0105	PHANTOM CS SIDE-LOADING RETRACTOR BLADE HANDLE	2
CS-0106	PHANTOM CS COLOR-CODED DEPTH GAUGE	1
CS-0114	PHANTOM CS DISTRACTION SCREW DRIVER, W/O SPRING	2
CS-0119	PHANTOM CS UNIVERSAL DISTRACTION SCREW DRILL GUIDE, FITS ALL DISTRACTORS	1
CS-0127	PHANTOM CS DISTRACTOR W/60MM HINGED ARMS, 120MM RACK	1
CS-0602	PHANTOM CS STERILIZATION TRAY (FOR CS-1602 & 1603 SETS)	1

# PHANTOM CS™ BASIC SIDE-LOADING SET

## CS-1603

CAT. NO.	DESCRIPTION	QTY.
CS-0030	PHANTOM CS CERVICAL BLADE BLUNT 20 x 30MM, SILVER	2
CS-0032	PHANTOM CS CERVICAL BLADE BLUNT 20 x 40MM, RED	2
CS-0034	PHANTOM CS CERVICAL BLADE BLUNT 20 x 50MM, VIOLET	2
CS-0036	PHANTOM CS CERVICAL BLADE BLUNT 20 x 60MM, GOLD	2
CS-0038	PHANTOM CS CERVICAL BLADE BLUNT 20 x 70MM, LIGHT GREEN	2
CS-0050	PHANTOM CS CERVICAL BLADE SHORT TEETH 23 x 30MM, SILVER	1
CS-0052	PHANTOM CS CERVICAL BLADE SHORT TEETH 23 x 40MM, RED	1
CS-0054	PHANTOM CS CERVICAL BLADE SHORT TEETH 23 x 50MM, VIOLET	1
CS-0056	PHANTOM CS CERVICAL BLADE SHORT TEETH 23 x 60MM, GOLD	1
CS-0070	PHANTOM CS CERVICAL BLADE LONG TEETH 23 x 30MM, SILVER	1
CS-0072	PHANTOM CS CERVICAL BLADE LONG TEETH 23 x 40MM, RED	1
CS-0074	PHANTOM CS CERVICAL BLADE LONG TEETH 23 x 50MM, VIOLET	1
CS-0076	PHANTOM CS CERVICAL BLADE LONG TEETH 23 x 60MM, GOLD	1
CS-0100	PHANTOM CS TRANSVERSE RETRACTOR W/DOUBLE HINGE, 120MM RACK	1
CS-0101	PHANTOM CS LONGITUDINAL RETRACTOR W/DOUBLE HINGE	1
CS-0105	PHANTOM CS SIDE-LOADING RETRACTOR BLADE HANDLE	2
CS-0106	PHANTOM CS COLOR-CODED DEPTH GAUGE	1
CS-0114	PHANTOM CS DISTRACTION SCREW DRIVER, W/O SPRING	2
CS-0127	PHANTOM CS DISTRACTOR W/60MM HINGED ARMS, 120MM RACK	1
CS-0602	PHANTOM CS STERILIZATION TRAY (FOR CS-1602 & 1603 SETS)	1

