

# PHANTOM AL™ SERIES

## ANTERIOR LUMBAR RETRACTOR SET

AL-1000



**TSI**

**TeDan Surgical  
Innovations**

# PhantomAL™ RETRACTOR SET

## AL-1000



Positive and negative angulation of retractor blades improves exposure. Blades may be positioned by hand to improve tactile feel.



Innovative Double Pin Connector provides a secure blade attachment and allows the surgeon to choose a fixed or swivel attachment.

## BENEFITS OF FULL SETUP



- 1 LED lighting system improves visualization by illuminating the operative site. Light may be easily adjusted throughout the procedure as needed.
- 2 Clamps and blade holders may be positioned anywhere along the retractor frame.
- 3 Independent blade retraction and angulation maximizes exposure and minimizes the potential for tissue trauma.
- 4 Two point fixation stabilizes ring.

## RETRACTOR BLADES



AL-0200 - AL-0214

### Phantom AL™ Retractor Blades, 25 mm

25 mm wide retractor blades are available in lengths ranging from 60 mm to 200 mm in 20 mm increments. All Phantom AL™ blades are semi-radiolucent titanium. Blades are designed to minimize stress fractures and bending.



AL-0400 - AL-0434

### Phantom AL™ Retractor Blades, 50 mm

50 mm wide retractor blades are available in lengths ranging from 60 mm to 200 mm in 20 mm increments.

## ACCESSORIES



ML-0505

### Phantom XL™ Hex Driver Tool

-Used to tighten ring assembly



AL-0103

### Phantom AL™ Ring Clamp



AL-0101

### Phantom AL™ Extension Bar

-For a larger incision, extension bars transfer the circular ring into an oval



AL-0105

### Phantom AL™ Blade Holder



AL-0106

### Phantom AL™ Hex Wrench

-Hex Wrench loosens and tightens the AL™ Blade Holder

## ARTICULATING ARM



AL-0110  
**Phantom AL™ Accessory Arm with Ring Clamp**  
Rotating table clamps and articulating arms maximize working space and enable unimpeded access to operative site.



ML-0021  
**Phantom ML™ Rotating Table Clamp for Accessory Arm**

## LIGHTING



ML-0046  
**Phantom ML™ Light Cable w/ TeDan Connector**  
-Sterile, Single Use Only



ML-0048  
**Phantom ML™ Light Cable, 10 ft., Strong Curve, w/ TeDan Connector**  
-Reusable



ML-0051  
**Phantom ML™ LED Light Source**  
-Bright, 52-watt LED light source, cool light

\*ML-0046 not included in set, optional item

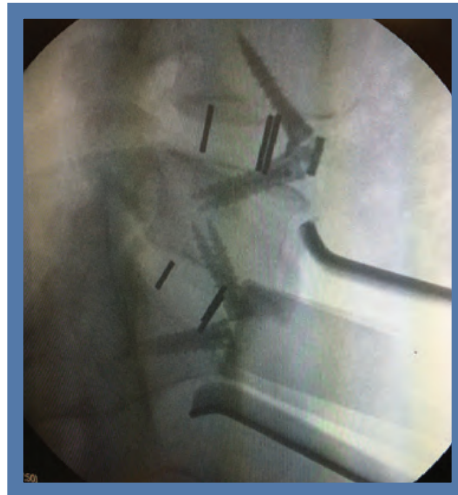
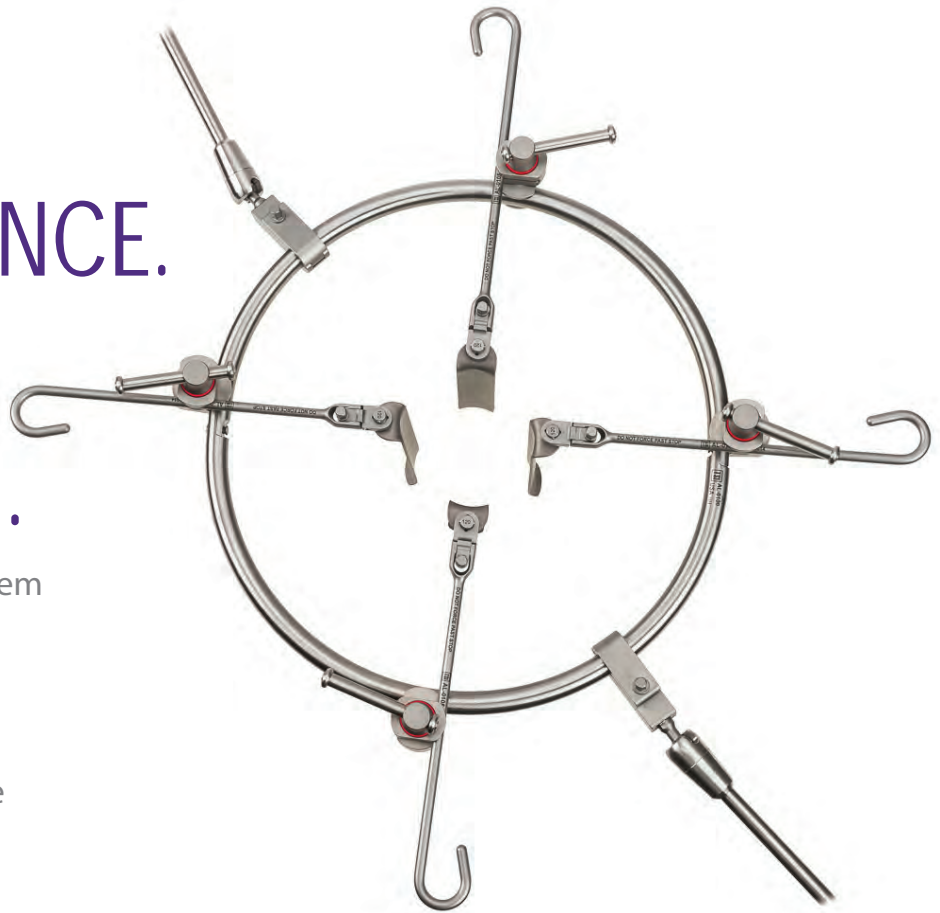


HS-0305  
**Phantom HS™ Light Cable Flex Arm**



# EXPERIENCE THE DIFFERENCE. EXPERIENCE INNOVATION.

The Phantom AL™ Retractor System facilitates minimally invasive exposure of the anterior lumbar spine. This versatile system enables hands-free retraction and unparalleled access to the operative site.



TeDan Surgical Innovations, LLC

Ph: 713-726-0886 Fax: 713-726-0846 Toll Free: 877-726-0886

12615 West Airport Blvd., Suite #200, Sugar Land, Texas 77478

Email: [sales@tedansurgical.com](mailto:sales@tedansurgical.com)

[www.tedansurgical.com](http://www.tedansurgical.com)

# PHANTOM AL™ ANTERIOR LUMBAR RETRACTOR SET

AL-1000

CAT. NO.	DESCRIPTION	QTY.
AL-0100	PHANTOM AL RETRACTOR RING	1
AL-0101	PHANTOM AL EXTENSION BAR	2
AL-0103	PHANTOM AL RING CLAMP	6
AL-0105	PHANTOM AL BLADE HOLDER	6
AL-0106	PHANTOM HEX WRENCH	2
AL-0110	ACCESSORY ARM WITH RING CLAMP	2
AL-0200	PHANTOM RETRACTOR BLADES, 25X60MM, TITANIUM	4
AL-0202	PHANTOM RETRACTOR BLADES, 25X80MM, TITANIUM	4
AL-0204	PHANTOM RETRACTOR BLADES, 25X100MM, TITANIUM	4
AL-0206	PHANTOM RETRACTOR BLADES, 25X120MM, TITANIUM	4
AL-0208	PHANTOM RETRACTOR BLADES, 25X140MM, TITANIUM	4
AL-0210	PHANTOM RETRACTOR BLADES, 25X160MM, TITANIUM	4
AL-0212	PHANTOM RETRACTOR BLADES, 25X180MM, TITANIUM	4
AL-0214	PHANTOM RETRACTOR BLADES, 25X200MM, TITANIUM	4
AL-0420	PHANTOM RETRACTOR BLADES, 50X60MM, TITANIUM	2
AL-0422	PHANTOM RETRACTOR BLADES, 50X80MM, TITANIUM	2
AL-0424	PHANTOM RETRACTOR BLADES, 50X100MM, TITANIUM	2
AL-0426	PHANTOM RETRACTOR BLADES, 50X120MM, TITANIUM	2
AL-0428	PHANTOM RETRACTOR BLADES, 50X140MM, TITANIUM	2
AL-0430	PHANTOM RETRACTOR BLADES, 50X160MM, TITANIUM	2
AL-0432	PHANTOM RETRACTOR BLADES, 50X180MM, TITANIUM	2
AL-0434	PHANTOM RETRACTOR BLADES, 50X200MM, TITANIUM	2
AL-0700/01	PHANTOM AL STERILIZATION TRAY 1, BASE	1
AL-0700/02	PHANTOM AL STERILIZATION TRAY 2, BLADES	1
HS-0305	PHANTOM LIGHT CABLE FLEX ARM	1
ML-0021	PHANTOM ML ROTATING TABLE CLAMP FOR ACCESSORY ARM	2
ML-0048	PHANTOM ML LIGHT CABLE, 10 FT, STRONG CURVE, W/TEDAN CONNECTOR	1
ML-0051	PHANTOM ML LED LIGHT SOURCE	1
ML-0505	PHANTOM XL HEX DRIVER TOOL	1

