

PHANTOM ML™ LIGHTING SYSTEM

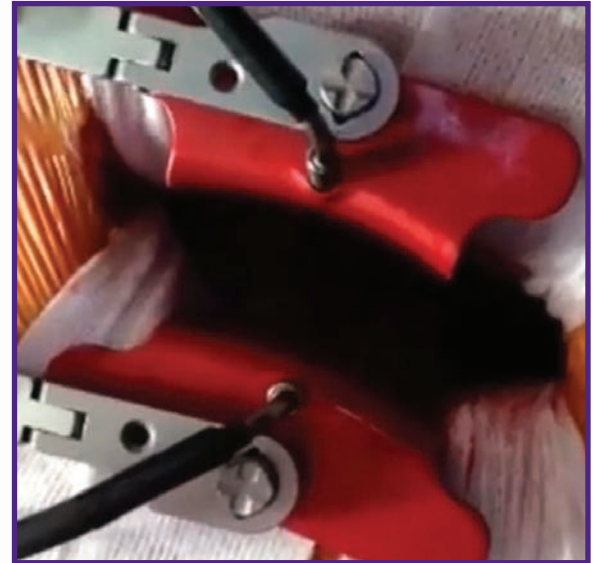
TSI

**TeDan Surgical
Innovations**

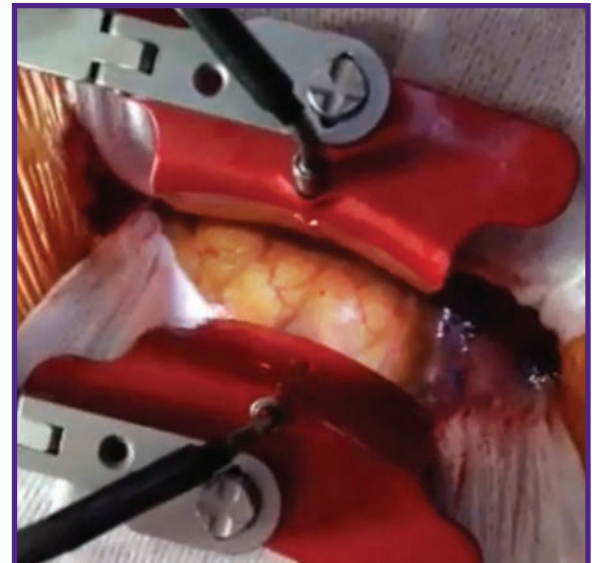


Phantom ML™
Reusable Light Cable

Phantom ML™ LED
Light Source



Light cable in retractor blades with light off



Light cable in retractor blades with light on

Features

- Provides direct illumination of surgical site
- Reduces fatigue caused by extended wear of surgical head light
- Bright 52-watt LED light provides bright exposure with minimal heat output

Phantom ML™ Light Cables and Light Source

Provide superior illumination of the surgical site.



Strong Curve vs. Regular Curve:

Different tip angles provide proper fit into the product's light channel.

ML-0048

- Strong curve
- For use with ML Tubes, CT Retractor Blades, HS-0305

ML-0045, ML-0047

- For use with CS, LS, ML, MC Retractor Blades



ML-0051

Phantom ML™ LED Light Source

- Bright, 52-watt LED light source, cool light
- Ultra Small Footprint (7½" x 4½" x 3")



ML-0045

Phantom ML™ Light Cable w/ TeDan Connector

- Reusable



ML-0048

Phantom ML™ Light Cable Strong Curve w/ TeDan Connector

- Reusable



ML-0047

Phantom ML™ Light Cable Single Ended w/ TeDan Connector

- Reusable
- Designed for use during procedures in which only one lighted blade is utilized
- Ideal for use with lighted MC blades when performing microdissectomies or hemilaminectomies



Sterile, Single Use Light Cable:

ML-0046

Phantom ML™ Light Cable w/ TeDan Connector

- Sterile, Single Use Only

For the brightest light every time

CONTACT US

TeDan Surgical Innovations, LLC
12615 W. Airport Blvd, Suite 200 • Sugar Land, TX 77478
Ph: 713-726-0886 • Fax: 713-726-0846 • Toll Free: 877-726-0886
www.tedansurgical.com • sales@tedansurgical.com

